
Landscape Design Proposal For Linear Coastal Park

28th March 2018



Linear Coastal Park at North Beach Greystones, Co. Wicklow.

The design of the park aims to protect the coastal amenity and scenic quality of the area while providing a safe and sustainable recreational park. The design includes undulating mounding and a safety barrier to prevent the public from accessing the clifftop edge. The undulating mounding will compliment the character of the surrounding landscape and be reminiscent of coastal dunes.

The design of the park creates new wildlife corridors linking with the landscape along the Bray Head walk. The mounding which shields the public from the cliff edge will also preserve areas of long grass from pedestrian traffic, creating undisturbed wildlife corridors.

These areas of undisturbed meadow will abut the existing open drain which has good vegetative cover and allows wildlife access to fresh water.

The designed mounds will also facilitate the successful inclusion of trees within the park. Not only will the mounds provide shelter for the trees but also the people walking through the park on the path to the Bray Head Walk. This access path has been aligned to follow the desire line.

The sustainability of public parks can be greatly affected by 'fear of crime'. The park has been designed to reduce the perception of 'fear of crime'. The main plaza and open play area are positioned in an area of the park that is over looked by houses and apartments creating a self-policed area. The dog park has been located close to the exit onto the Bray Head Walk to ensure that there is a high use area within the park reducing the level of 'fear of crime'. This area of the park can also be overlooked from the seating areas/ viewing points on top of the mounds.

Dense planting will be focused along the shared boundary with linear car parking and along the railway line.

The railway line planting will create a strong wildlife corridor. The planting along the linear car parking will prevent children from running out from the park between parked cars. The mounds and areas of long grass will only be topsoiled where mown paths are to be created. The rest shall be subsoil to facilitate the sustainable introduction of wildflower species. A coastal grass seed mix shall be used throughout. In recreation areas this coastal grass seed mix shall be tailored for amenity use to provide a quality sward. These areas are also sheltered by the sculpted levels to ensure that they have some level of protection from the salt laden winds.

The park will have a strong 'sense of place' rooted in the coastal character of the site. Pier stones shall be used to provide seating throughout the park. Given the coastal location, the granite pier stones are a more sustainable seating option than metal or wooden benches. Building stone from The Gap Bridge shall be used to create interpretative signage relating to the development of Greystones harbour. The pathways will be surfaced with Ballylusk 6mm down to dust.

In brief, the park is designed to be a sustainable low maintenance public amenity which reflects the sites unique coastal location.

Landscape Plan



Zone 1- Entrance Area



LEGEND

A. Main Plaza with Seating

B. Shared Pathway (3 m Wide) Ballylusk 6mm down to dust

C. Seating plazas are located throughout the park





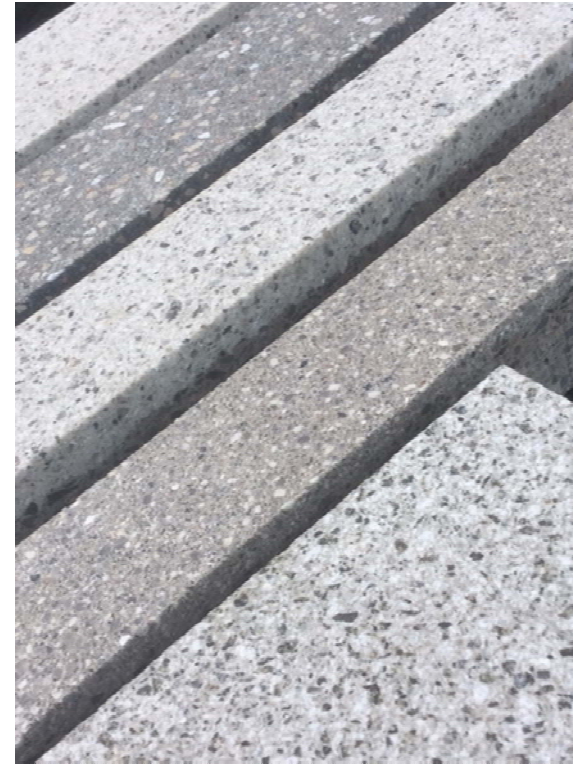
**Concrete Boxes
at Entry plaza**



**Area B -Shared Pathway;
Ballylusk Gravel, 6mm
Down to dust.**



**Link between Area
A and C- Elevated
Walkway.
Finish level to be
150 mm above
adjoining planted
area.**



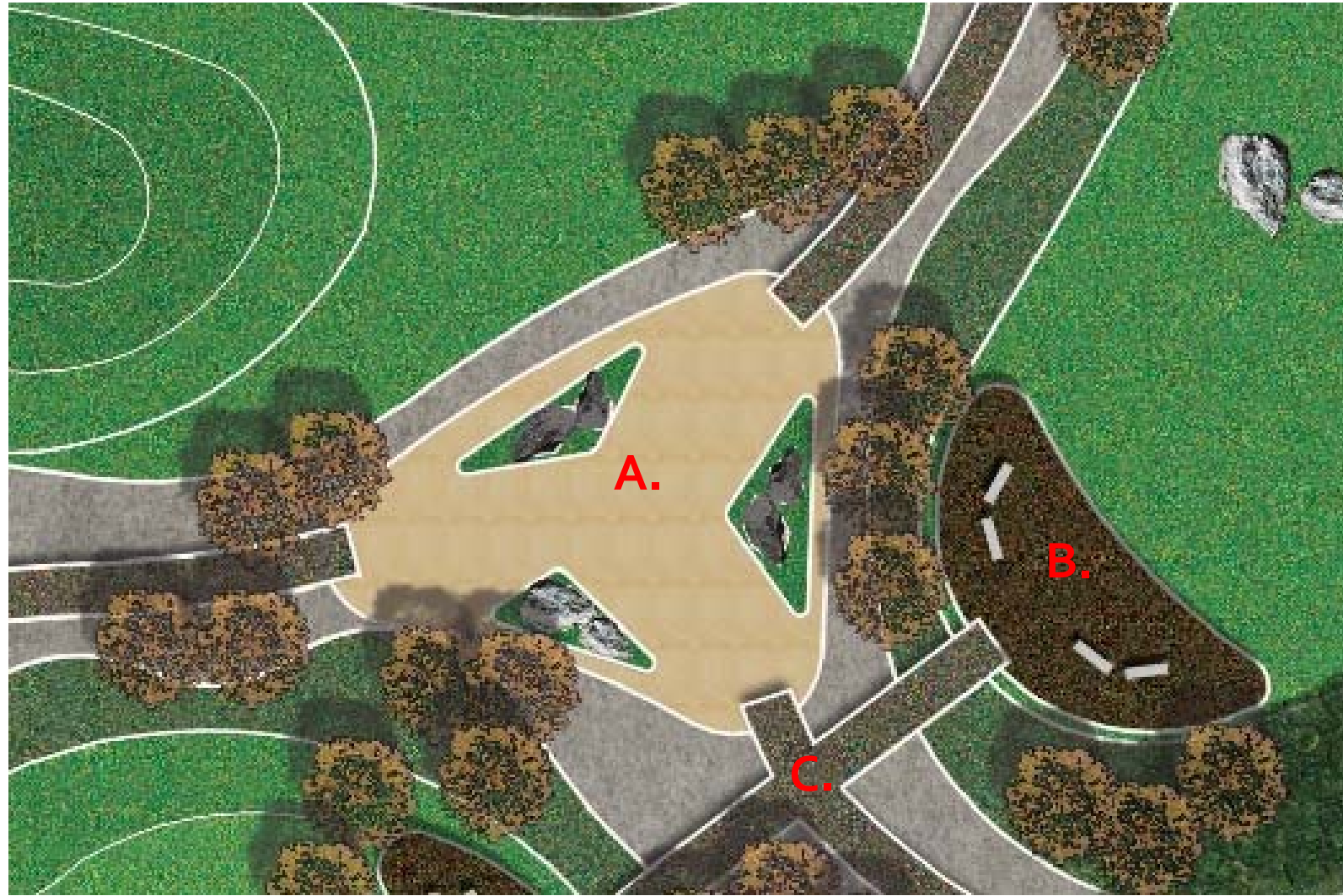
Plaza Finish (Area A)

**Acheson & Glover:
Terrapave, Fine Textured Finish**



**Acheson & Glover: Terrakerb,
Square Edge**

Zone 2- Central Area



LEGEND

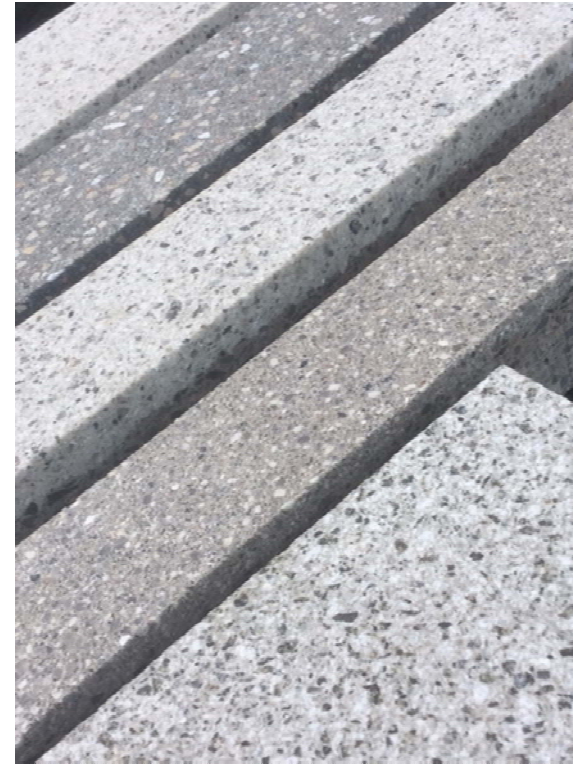
A. Central Plaza

B. Seating Plaza

C. Shared Pathway
(3 m Wide)

Area A- Central Plaza
Planting Beds with
Rocks





**Area A Central
Plaza Finish
Options-**

**Acheson &
Glover:
Terrapave, Fine
Textured Finish**



**Acheson &
Glover: Terrakerb,
Square Edge**

Zone 3- Cliff Side Mound with Seating



LEGEND

A. Earth Mound

B. Seating Plaza



Seating shall be created using existing quay stones on site



Sculpted Mounds



Sculptural Stone

Zone 4- Dog Play Park

LEGEND

A. Dog Play Area Entry

B. Dog Park

C. Timber Fence



Dog Park Gate will ensure dogs are contained within the fenced area

Zone 4- Dog Play Park

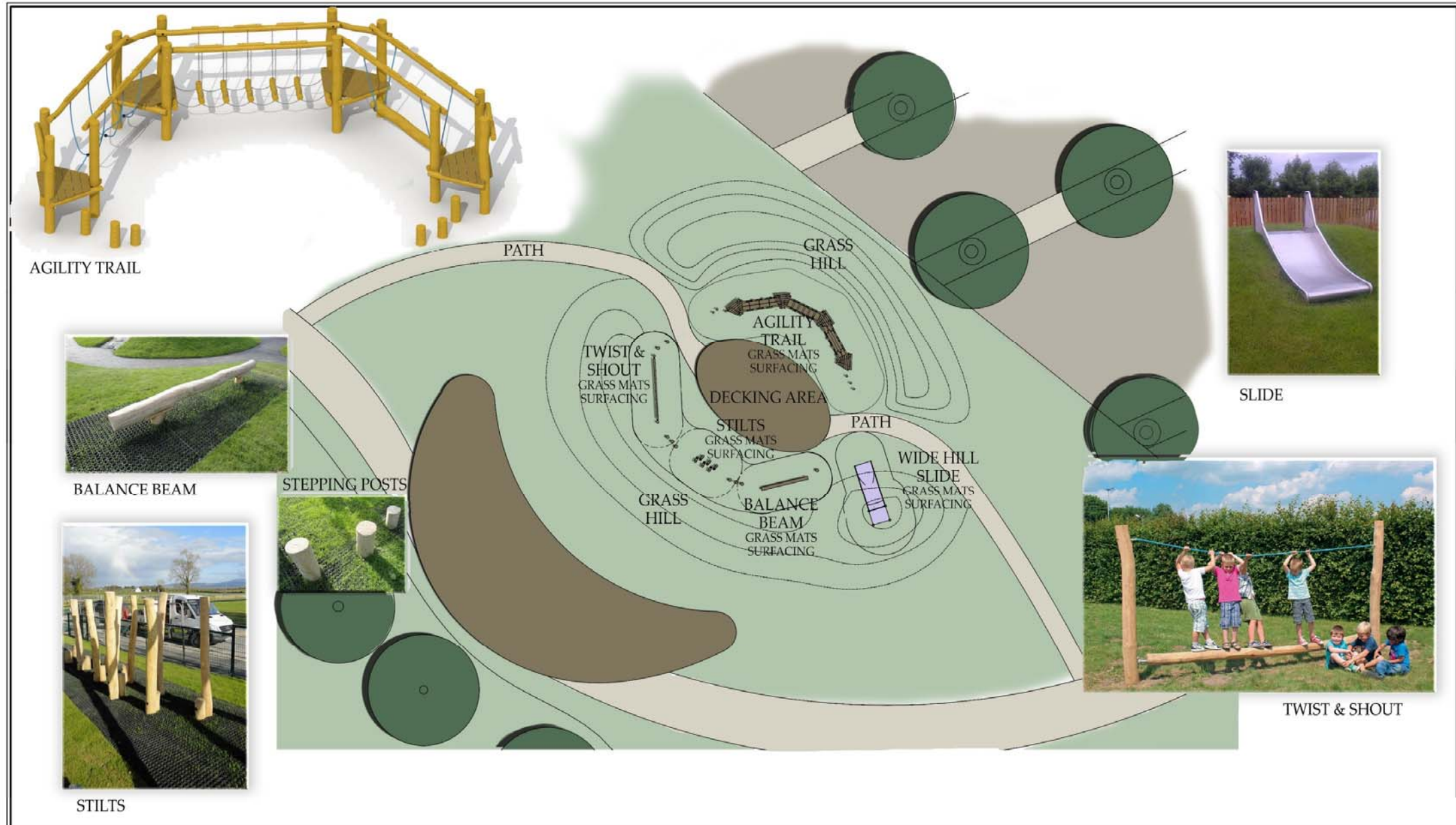


**Timber Fence
Zone 4 Dog Area- 1.6 m high
Clifftop- 1.8m high**



Zone 5-Open Play Area

COASTAL LINEAR PARK PLAYGROUND



Zone 5-Open Play Area

Agility Trail – RO695



Product Specifications	RO695
Manufacturer	Europlay/ ECO-Play
Critical Fall Height	< 1m
Safety Zone	67 sq m
Wetpour Depth	40mm
Materials	Robinia Hardwood
Durability	Class I Hardwood
Age Group	4yrs +
Play Category	agility, balance, coordination,
Manufacturer's warranty	10 years on dry rot
	2 years on failure from construction defects
	5 years on metal corrosion

Product Description

This Agility Trail offers a combination of balance and agility. The trail includes:

- 6 Stepping Posts
- 4 Platforms – for rest play and platforms linking each piece together
- Hanging Log
- Chain Balance Bridge
- Rope Walk Bridge

Please note each piece has handrails to offer support to the various abilities using this piece.

Zone 5-Open Play Area

Stilts



Product Specifications		GR-0001
Manufacturer	Robinia Group	
Critical Fall Height	0.40m	
Safety Zone	18.5 sq m	
Wetpour Depth	None required	
Wood	Robinia Hardwood	
Durability	Class I	
Age Group	4yrs +	
Play Category	Balance, agility, coordination and social play	
Manufacturer's warranty	5 years on workmanship and all other materials 10 years on robinia hardwood	

Product Description:

Robinia hardwood posts with foot holds at shin height. Posts are set into the ground in pairs.

Propose 3 sets.

Zone 5-Open Play Area

Twist & Shout



Product Specifications		RO335
Manufacturer	ECO-Play by Europlay	
Critical Fall Height	0.6m	
Safety Zone	21 sq m	
Wetpour Depth	40mm	
Total Height	1.7m	
Timber	Robinia Hardwood	
Durability	Class I	
Age Group	4 years plus	
Play Category	Balance, agility, swinging, sical and imaginative play	
Manufacturer's warranty	10 years on dry rot	
	5 years on metal corrosion	

Product Description:

A hardwood Robinia beam with rotating ends fixed to Robinia posts. Rope is provided for support.

Zone 5-Open Play Area

1m Wide Hill Slide with Platform



Slide Product Specifications	
Manufacturer	R&T Stainless
Critical Fall Height	Depends on slide height
Metal	Stainless Steel grade 304, sliding sheet metal 2.0mm
Durability	Corrosion resistant and maintenance free
Slide Width	1m wide
Slide Height	900mm-1m high
Slide Product Specifications	
Platform	Robinia Hardwood
Class	Class I
Platform Width	1m wide

Product Description:

1m wide slide which is mounted on landscaped mound.

Zone 5-Open Play Area

Balance Beam



Product Specifications		JE05
Manufacturer	Robinia Group	
Critical Fall Height	0.40m	
Safety Zone	18.24 sq m	
Wetpour Depth	20mm	
Wood	Robinia Hardwood	
Durability	Class I	
Age Group	4yrs+	
Play Category	Balance, agility, coordination and social play	
Manufacturer's warranty	5 years on workmanship and all other materials 10 years on robinia hardwood	

Product Description:

3.0m long beam of natural Robinia hardwood elevated by two 0.4m support beams..

Zone 5-Open Play Area

Stepping Posts



Product Specifications		E-SP1
Manufacturer	Robinia Group	
Critical Fall Height	0.30m	
Safety Zone	n/a	
Wetpour Depth	None required	
Wood	Robinia Hardwood	
Durability	Class I	
Age Group	3yrs +	
Play Category	Balance, agility, coordination and social play	
Manufacturer's warranty	5 years on workmanship and all other materials 10 years on robinia hardwood	

Product Description:

Hardwood Robinia posts of varying heights securely planted in the ground.

3 stepping posts propose per trim trail piece to link each piece together to create a trail.

Hard Landscaping



Ballylusk Gravel pathways will form the pathways through the park. The gravel will be 6mm down to dust. This will form a permeable surface.



Acheson & Glover will be laid in charcoal and silver which help to disguise any staining.

Original Park Proposals

3460m² hard landscaping

2000m² of hard landscaping is impermeable

The new proposals for the park have increased the areas of hard landscaping to create a sustainable park, that will be accessible and usable throughout the year.



Acheson & Glover paving is has been selected for the plaza area and the central junction point in the park. It is a permeable paving option, slip resistant, frost resistant and suitable for heavy pedestrian traffic.

New Park Proposals

3732m² hard landscaping

0m² of hard landscaping is impermeable



Stone from The Gap Bridge shall be used in Lawn and other areas



Seating can be made from the old pier stone available

Rock Features- Creating Sense of Place



Pier Wall Stone on Site



The stones can be used to display information on how the fishing harbour has grown and developed over time



The Pier stones will also be used to create seating



The seating will be set into the undulating mounds and become part of the overall landscape design.

The design and detailing of the park aim to create a strong sense of place via a landscape that is bound to the locality through history, memory and materials. There is a quantity of Wicklow Brown Granite stone on site that has strong links with the location.

Local brown granite blocks from the old quay wall are located on site. These are well dressed and shall be used as seating on the site. Some shall be further developed to provide discrete, sustainable signage.

The climate of the site would be particularly harsh to street furniture. Using the stone block offers an opportunity to create sustainable seating unique to the location.



Some of the stones will be used to provide directional signage relating to the Bray Walk

Rock Features- Creating Sense of Place continued



Building stone from The Gap Railway Bridge on Site

Brown granite building stone from The Gap Railway Bridge are also located on site. The railway has had a strong influence on the development of Greystones. Some of the large stones will be dressed historical information relating to the railway will be presented on the stone boulders.

These stones will also be clustered at the major central junction of movement in the park.

Larger stones will be used to create upright standing stone features within the landscape. Some of these stones will be 'Oculus' stones. They will be located to highlight the location of viewing points within the park. These stones are reminiscent of our Neolithic, Celtic and Viking history.

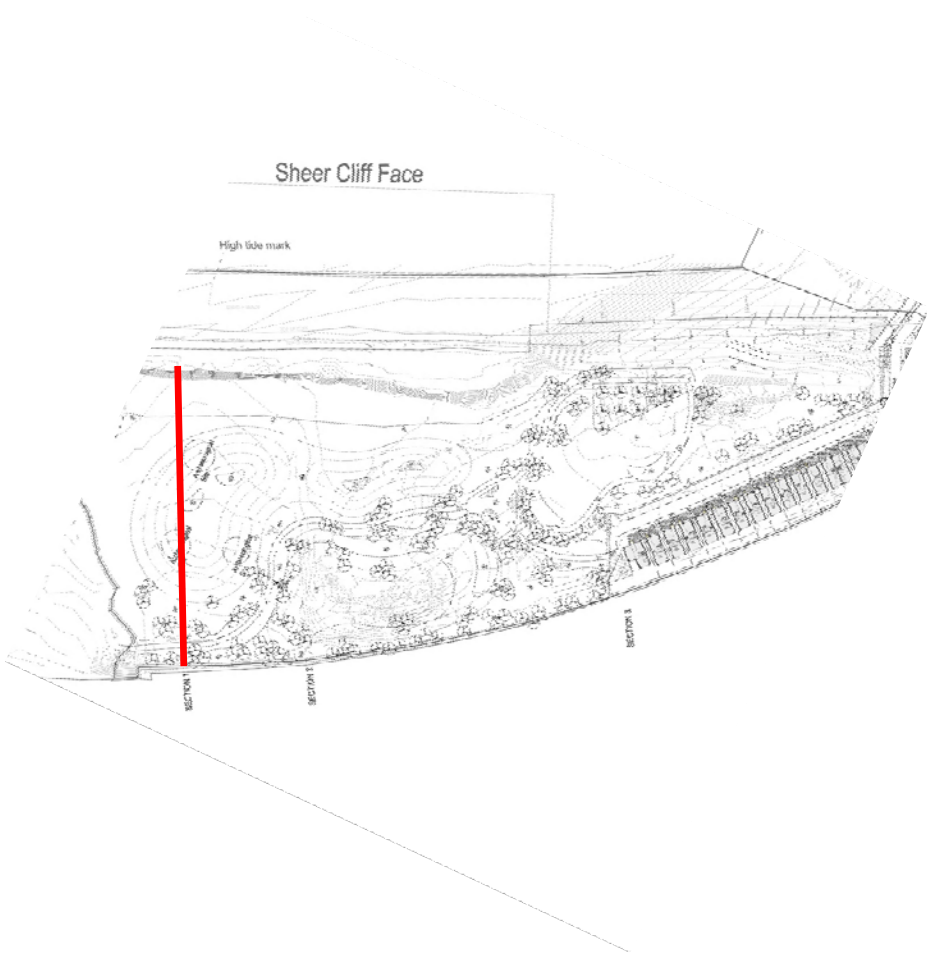
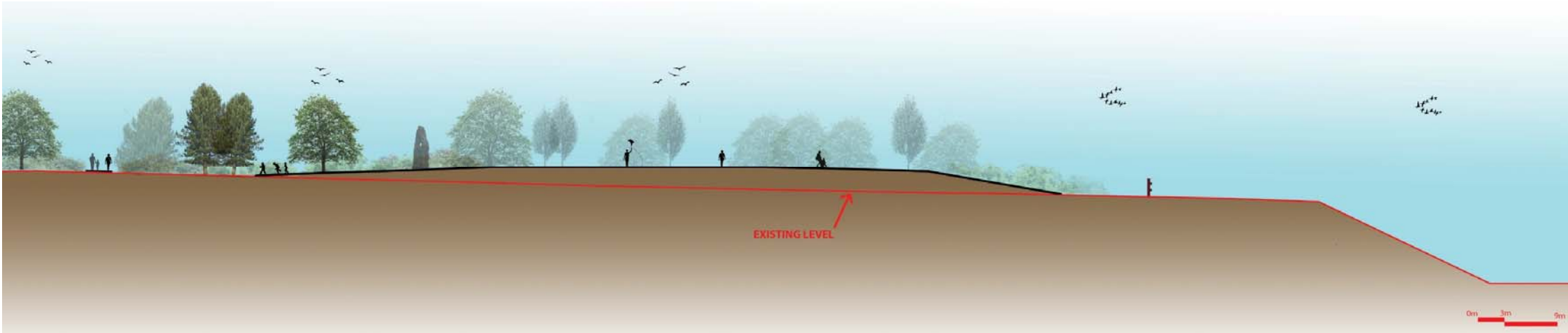


The stones could be used to present information on the influence of the railway on the town.

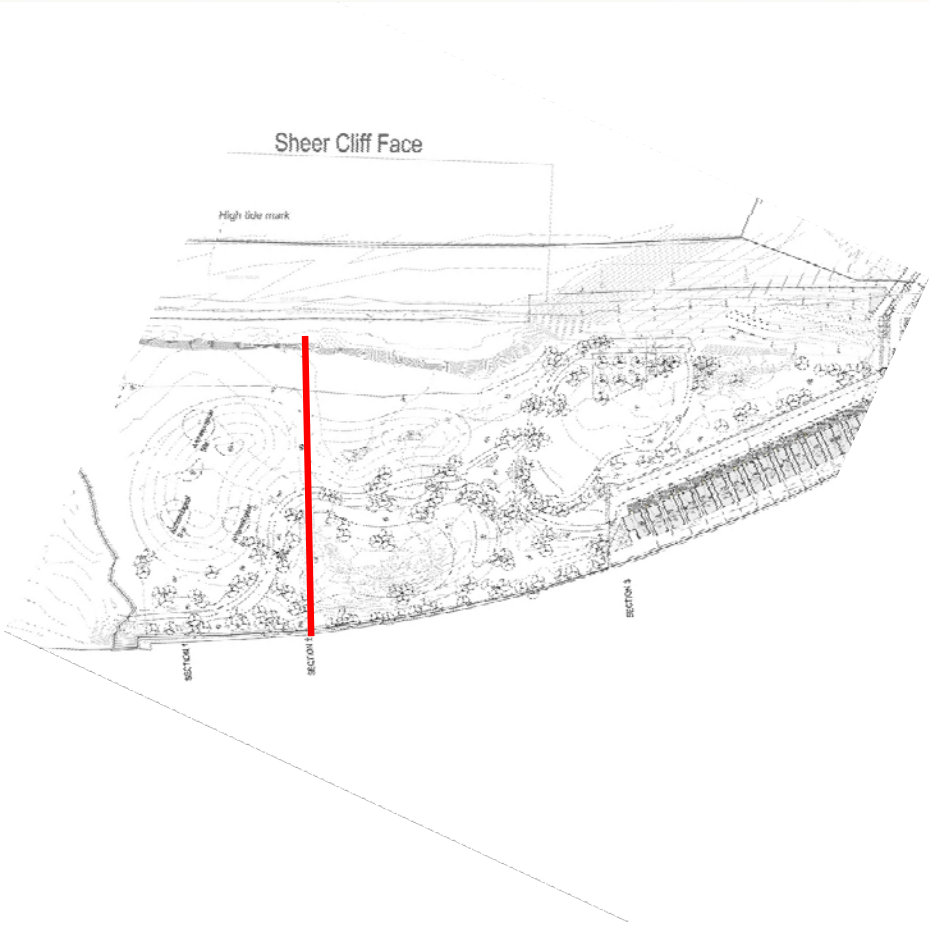
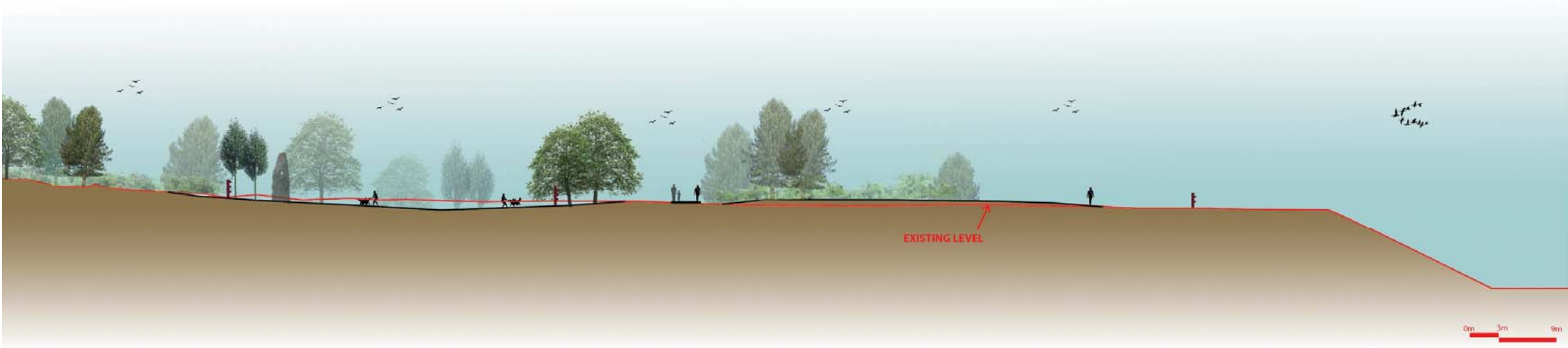


Standing stones will be used to highlight viewing points within the park.

Section 1-



Section 2-



Section 3-

